

Solid Wall Die Heads

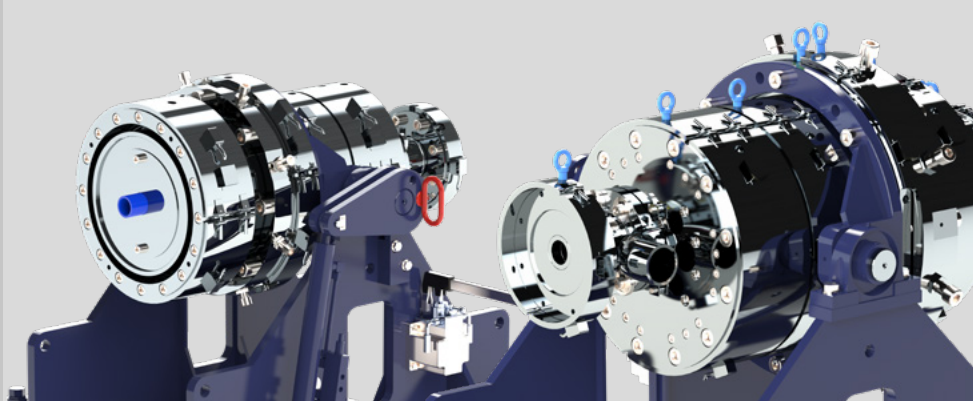
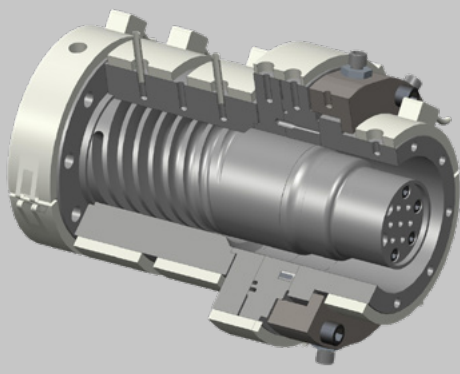
For PO Pipes

Rollepaal's Spiral Mandrel Die Heads (RSMD) for PO pipes are characterised by their user-friendly design based on experience gained worldwide. These dies are robust, while still easy to assemble and dismantle. Rollepaal's spiral mandrel design is optimised for reliable and reproducible production, allowing for high output. The proven spiral mandrel design ensures the best layer distribution and low eccentricity.



Rollepaal

Pipe Extrusion Technology



Solid Wall Die Heads

Rollepaal's years of experience in extrusion has resulted in products that are based on a sound theoretical approach combined with broad practical experience. Our RSMD Solid Wall Die Head is the tried and tested heart of a solid wall PO pipe extrusion line. RSMD die heads have been computer designed based on a 3D viscoelastic model for plastics.

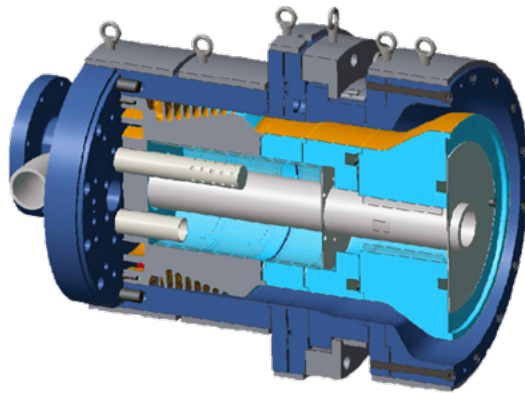
Pipe Atmospheric Cooling (standard)

The die head offers the option to draw in air from the end of the pipe ($\varnothing > 125\text{mm}$) and release the hot air into the atmosphere through the die head later in the process. When a pipe is cooled from the inside, 20% to 30% of

the cooling length is reduced, depending on wall thickness. The system consists of a high capacity air blower, air ducts in the die head, a control box for the blower with speed indicator and an air temperature gauge.

Internal Head Cooling (optional)

The internal surface of the die head as well as some of the mandrels can be air cooled. In this system, air is blown into the inner chamber of the die head with the help of a diffuser, after which the hot air is discharged. This system has the advantage of enabling higher output for the larger dies.



Features and benefits

- ▶ Pipe size range covers all SDR classes according to standard
- ▶ Self-cleaning and short dwell time for material
- ▶ Low pressure build up even with high viscosity materials like PE100 and PE100++ thanks to melt flow system
- ▶ Addition of 3/4/6/8 colour stripes without dismantling the jockey extruder
- ▶ Modular design that works with ADD ON sets without range adaptors
- ▶ Quicker die change in horizontal orientation
- ▶ Less tooling required
- ▶ Increased productivity
- ▶ Higher line output or, optionally, a shorter extrusion line
- ▶ Better roundness
- ▶ Less internal stress
- ▶ Less thermal degradation on inner surface

Product range*

Type	$\varnothing = \text{mm}$																									
	16	20	25	32	40	50	63	75	90	110	125	140	160	180	200	225	250	280	315	355	400	450	500	560	630	
RSMD 6	■	■	■	■	■	■	■	■	■	■	■	■	■	■	■	■	■	■	■	■	■	■	■	■	■	■
RSMD 10	■	■	■	■	■	■	■	■	■	■	■	■	■	■	■	■	■	■	■	■	■	■	■	■	■	■
RSMD 16	■	■	■	■	■	■	■	■	■	■	■	■	■	■	■	■	■	■	■	■	■	■	■	■	■	■
RSMD 24	■	■	■	■	■	■	■	■	■	■	■	■	■	■	■	■	■	■	■	■	■	■	■	■	■	■

- * 2 closer to Standard Dimensional Ratios (SDR) can be processed with one mandrel
Tooling for RSMD 6 / RSMD 10 / RSMD 16 is interchangeable
- Optional pipe size range can be produced
- < RSMD 16 and RSMD 24 are supplied with a hydraulic trolley as standard
- > 2 and 3-layer die heads can also be supplied



Rollepaal

Pipe Extrusion Technology

P.O. Box 21
7700 AA Dedemsvaart
The Netherlands
Rollepaal 13
7701 BR Dedemsvaart

Phone +31 (0)523 62 45 99
info@rollepaal.com

www.rollepaal.com